

IGT Global Standard Tester 2

Prints all sorts of materials:

Paper, board, plastic film, cellophane, laminate,
metal, etc.



IGT Global Standard Tester 2

FEATURES

- Possibility for installing a doctor blade and pneumatic metering system for tests on flexo ink, gravure ink, Heliotest ink and other liquids
- Constant printing speed
- Speed adjustable from 0.2 to 4 m/s
- Printing force adjustable from 100 to 1000 N
- Pneumatic printing force system
- Equipped with two printing shafts
- Interval time adjustable from 0.2 to 120 s between the first and the second printing disc, more stop positions and rotations possible so longer interval times can be realised
- Printing width maximum 50 mm, printing length 200 mm
- Computer controlled process
- Pre-programmed test conditions

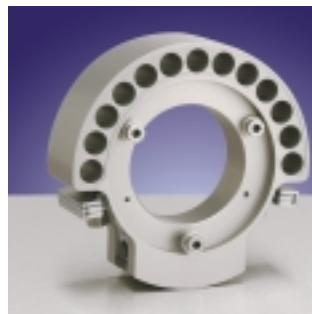
IGT Global Standard Tester 2

This tester has constant speed and is equipped with two printing shafts and has an adjustable interval time between these shafts. The tester offers the possibility to install an automatic metering system. With the help of accessories many paper and ink tests can be carried out for offset, flexo and gravure printing.

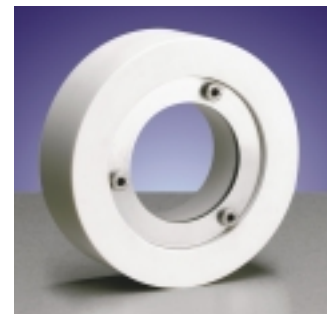
Standard tests:

- Mottle
- Toner adhesion (EN 12283)
- Colour / density (ISO 2846-1, -2, -3, -5)
- Chemical resistances (ISO 2836)
- Printing smoothness
- Scumming
- Print through
- Fluff
- Wet-in-wet printing
- Wet pick / wet repellence
- Set-off
- Heliotest
- Screened printing
- Gloss (ISO 15995)
- Ink transfer
- Imaging and wipe-ability of carbon and carbonless paper
- Absorption of rubber blanket
- Embossing

Sector with clamps



Sector without clamps



IGT Global Standard Testers

Pre-programmed test conditions

TYPE OF TEST:	GST P	GST 1	GST 1W	GST 2	GST 3M	GST 3H
Pick test -IGT method	•	•	•			
Pick test (rubber disc)	•	•	•			
Pick test -Westvaco method			•			
Print penetration		•	•			
Paper roughness		•	•			
Toner adhesion (accelerated)	•	•	•			
IGT Toner adhesion (EN 12283)				•	•	•
Colour/density				•	•	•
Print smoothness				•	•	•
Scumming				•	•	•
Mottle				•	•	•
Print through				•	•	•
Fluff				•	•	•
Wet on wet				•		
Wet pick / repellence				•		
Water interference mottle				•		
Set-off				•	•	•
Heliotest				•		•
Linting	•	•	•			
Screened printing				•	•	•
Gloss				•	•	•
Ink transfer				•	•	•
Imaging carbon paper				•	•	•
Wipe-ability carbon paper				•	•	•
Imaging carbonless paper				•	•	•
Wipe-ability carbonless paper				•	•	•
Felt-and wire side		•	•			
Blanket absorption				•		
Blanket roughness		•	•			
Embossing				•	•	•
Offset printing				•	•	•
Flexo printing				•		
Gravure printing				•		•
Intaglio printing				•	•	•
Letterpress printing				•	•	•

IGT ink pipette

For applying the offset ink onto the inking unit, we strongly recommend the use of the IGT ink pipette. With this ink pipette the accuracy of applying the ink, and therefore the accuracy of the execution of the test, will be increased. For higher accuracy applications the special high-resolution pipette can be supplied.



IGT Global Standard Testers

Excellent reproducibility

TECHNICAL DATA Global Standard Tester

Type Global Standard Tester	P	1	1-W	2	3	3-H
Printing (final) speed	0.5 - 4.0 m/s (increasing)			0.2 - 4.0 m/s (constant)		
Printing force	100 - 1000 N					
Maximum printing width	50 mm					
Printing length	200 mm					
Number of printing shafts	1			2	1	
Doctor blade system			•	Optional		•
Measuring system		•	•	•		•
Interval times				0.1 - 1000 s.	2 - 1000 s.	
Sector with clamps	•	•	•	Optional	Optional	•

High Speed Inking unit 4

- Top roller 1, 2 or 4 segments
- Inking surface 4 x 328 cm² (4 segments)
2 x 729 cm² (2 segments)
1 x 1537 cm² (1 segment)
- Inking speed 0.2 - 1.2 m/s
- Distributing time 5 - 200 s
- Inking time printing discs 5 - 200 s
- Temperature working area 15 - 45°C
- Maximum width printing disc 50 mm

Top rollers

- For conventional inks, 1, 2 or 4 segments
- Rubber for UV-drying inks, 1, 2 or 4 segments

Electrical connection:

- Global Standard Tester:
115 - 230 V / 50 - 60 Hz
- High Speed Inking Unit 4:
115 - 230 V / 50 - 60 Hz

General

- Inking and print area in separate testers
- Very fast ink distribution
- Easy to operate
- Reliable
- Low initial costs
- Possibility to process many substrates and inks
- Detailed instructions

Global Standard Tester

- Weight: 80 kg
Height: 580 mm
Width: 465 mm
Depth: 485 mm

High Speed Inking Unit 4

- Weight: 55 kg
Height: 300 mm
Width: 860 mm
Depth: 380 mm

Agent

IGT Testing Systems

Research, development and production of testing equipment for the printing and allied industries

IGT Testing Systems
P.O.Box 12688
1100 AR Amsterdam Z.O. The Netherlands
Phone : +31 20 409 9300
Fax : +31 20 697 4842
E-mail : info@igt.nl
Internet : www.igt.nl

IGT Testing Systems, Inc.
Arlington Center
543 West Golf Road
Arlington Heights IL 60005 USA
Phone : +1 847 952 2448
Fax : +1 847 952 2449
E-mail : usa@igt.nl

IGT Testing Systems Pte. Ltd.
Blk 1 Ang Mo Kio Industrial Park 2A
#06-12 AMK Tech 1
Singapore 568049
Phone : +65 6481 8993
Fax : +65 6481 9685
E-mail : singapore@igt.nl

IGT Testing Systems
2F Sagami Bldg., 1-6-14, Omote-cho, Sakura-shi,
Chiba-ken, 285-0811
Japan
Phone : +81 (0)43 483 1795
Fax : +81 (0)43 483 1803
E-mail : japan@igt.nl

